



RECP #: 752649

RECORDED 5/8/2019 AT 1:10 PM BK# 2620 PG# 1691
Debra K. Lee, CLERK OF LARAMIE COUNTY, WY PAGE 1 OF 1

STATE OF WYOMING CORNER RECORD

(In compliance with the CORNER PERPETUATION AND FILING ACT, Wyoming Statutes, 1997 Section 33-29-140, et. seq., and the Rules and Regulations of the Board of Registrations for Professional Engineers and Professional Land Surveyors)

SOUTHWEST CORNER SECTION 18, T. 18 N., R. 62 W., 6TH P.M., LARAMIE COUNTY, WYOMING

GLO: SET A SANDSTONE 16X10X4, 11 IN. DEEP WITH 3 MARKS ON NORTH AND SOUTH EDGES FOR CORNER TO SECTIONS 13, 18, 19, 24.

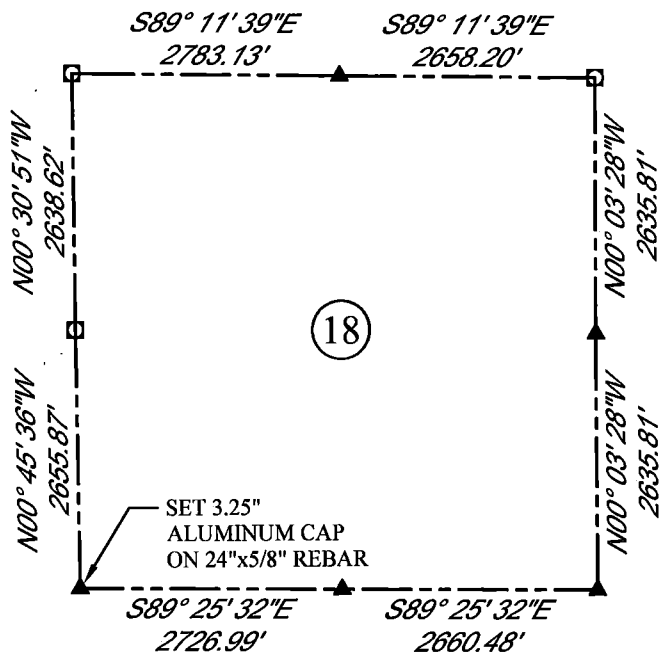
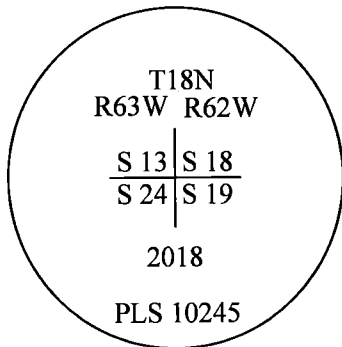
FOUND: NOTHING. SET ALUMINUM CAP AT PROPORTIONATE(SINGLE) DISTANCE.



SCALE: NONE

NORTH DETERMINED BY
G.P.S OBSERVATIONS

SET 3.25" ALUMINUM CAP ON #5
REBAR, 4" ABOVE SURFACE,
STAMPED AS SHOWN. PLACED
A SMALL MOUND OF STONES
ON NORTH SIDE OF CORNER



LEGEND:

- FOUND BLM CAP
- FOUND USFS CAP
- FOUND STONE
- FOUND PRIVATE MONUMENT
- ◆ CALCULATED POSITION
- ▲ SET MONUMENT (LS10245)
- SECTION LINE

DATE OF FIELD WORK: 9/24/2018 OFFICE REFERENCE: MERIDEN

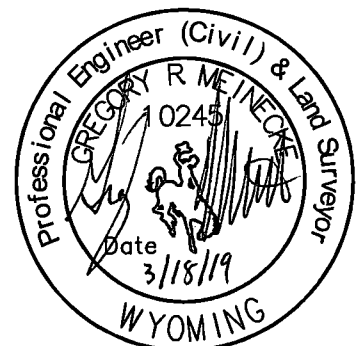
CROSS INDEX DIAGRAM

	1	2	3	4	5	6	7	8	9	10	11	12	13	14	15	16	17	18	19	20	21	22	23	24	25
A																									
B																									
C		6																							
D																									
E																									
F																									
G		7																							
H																									
J																									
K																									
L		18																							
M																									
N																									
O																									
P		19																							
Q																									
R																									
S																									
T		30																							
U																									
V																									
W																									
X		31																							
Y																									
Z																									
	1	2	3	4	5	6	7	8	9	10	11	12	13	14	15	16	17	18	19	20	21	22	23	24	25

WOOD
2615 AVIATION DRIVE
SHERIDAN, WY 82801
PH: 307-675-6400



THIS CORNER RECORD WAS
PREPARED BY ME OR UNDER
MY DIRECTION AND
SUPERVISION,
SEAL AND SIGNATURE



CORNER NAME: SOUTHWEST SECTION: 18 T. 18 N., R. 62 W. ; 6TH P.M. CROSS-INDEX # N-1
SBRPELS/PLSW: MARCH 1994; PLSW JANUARY 1998